

CHEMFIX 100

Pure Epoxy RESIN



A two component chemical anchoring injection system in 1:1 ratio. A formulation derived from pure epoxy with very high bond strength, developed principally to anchor threaded rods and rebar into concrete. Used for high performance structural applications where loading is critical.

• CHARACTERISTICS

- Suitable for high loads featuring large diameters and deep embedments.
- Longer working times make it suitable for large holes, and high temperatures.
- No shrinkage, good for large diameter fixings.
- Use in wet or flooded environments and fixing holes, or underwater.
- High durability, resistance to chemicals.
- Used for diamond drilled holes.
- Solvent free resin.
- Fixings in concrete, wood, or other high strength materials.

• APPROVALS / CERTIFICATIONS / TESTING

- ETA TR023+TR029 Post Installed Rebar Installations, Option 1 Concrete
- **C1 and C2 Seismic Approval end of 2021**
- EAD 330499-00-0601 & EAD 330087-00-0801
- CE Certified 1404-CPR-3135 / 3269 - ZAG, Slovenia.
- Fire Test Report in ETA.
- WRAS Approved for use with Potable drinking water* approval no. 1811527.
- LEED tested 2009 EQ c4.1 SCAQMD rule 1168 (2005.)
- VOC A+ Rating (Volatile Organic Content)

• PHYSICAL PROPERTIES

- Mixed Colour - Red or Grey
- Density - 1.43 kg/m³
- Compressive Strength - 88 N/mm² (EN ISO 604)

• TYPICAL TENSILE PERFORMANCE - STANDARD EMBEDMENT DEPTH

Concrete, C20/25, 5.8 Grade Studding						
Size	Recommended Load (kN)		Spacing (S _{cr,N}) (mm)	Drill Hole Ø (mm)	Fixing Hole Ø (mm)	Setting Depth (mm)
	Tension (N _{rec})	Shear (V _{rec})				
M8	9.07	5.14	160	10	9	80
M10	14.36	8.57	200	12	12	90
M12	20.86	12.00	240	14	14	110
M16	38.86	22.29	320	18	18	125
M20	60.64	34.86	400	22	22	170
M24	87.43	50.29	480	28	26	210
M30	138.93	81.43	600	35	32	280

• CARTRIDGE SIZES

400ml | 600ml



CHEMFIX 100

Pure Epoxy RESIN

• TYPICAL PERFORMANCE IN AERATED CONCRETE

Characteristic values of resistance under tension & shear loads for Autoclaved Aerated Concrete. Compressive strength of material $f_b > 6\text{MPa}$ Temp range -40 to $+40$ C degree.


Size	Condition :	d/d	w/w & w/d	d/d, w/w & w/d
	H _{ef} (mm)	Tension (kN)	Tension (kN)	Shear (kN)
M8	80	2	1.5	5
M10	90	3	2.5	8
M12	100	4	3.5	8
M16	100	5.5	4.5	8


*Note: The values are valid for steel 5.6 or greater. For steel 4.6 and 4.8 multiply VR_{k,b} by 0,8

• WORKING AND HARDENING TIMES

Base Material Temperature	5°C	15°C	25°C	35°C	40°C
Gel Working Time	100'	60'	40'	25'	20'
Curing Time Dry Concrete	40 hrs	24 hrs	11 hrs	9 hrs	8 hrs
Curing Time Wet Concrete	x 2	x 2	x 2	x 2	x 2

• APPROVALS

CE 1404
Chemfix Products Ltd
2019

DoP: www.chemfix.co.uk/dop/pe11
Chemfix 100 ETA-19/0705 EAD 330499-00-0601 M8-M24 8mm - 24mm Option 1+7 1404-CPR-3267

CE 1404
Chemfix Products Ltd
2019

DoP: www.chemfix.co.uk/dop/pe11r
Chemfix 100 ETA-18/1157 EAD 330087-00-0601 8mm - 40mm + Fire Post Installed Rebar 1404-CPR-3135

**FIRE
RATED**



1811527

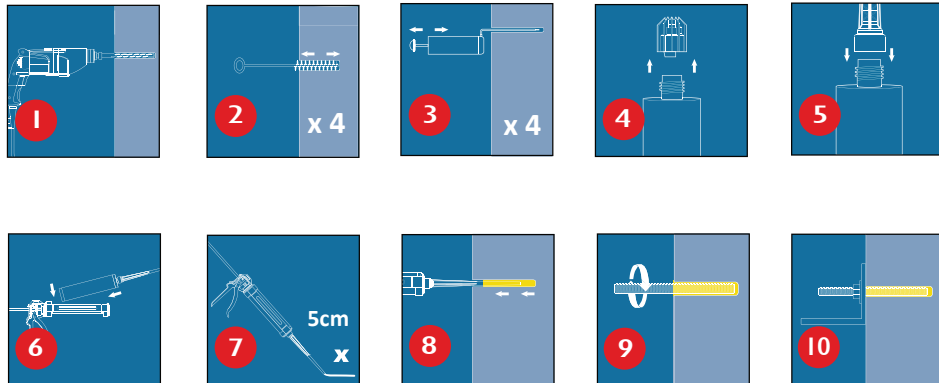


CHEMFIX 100

Pure Epoxy RESIN

• INSTALLATION

Solid substrates



Not for use in hollow wall applications.

For further information, please refer to the Technical Data Sheet.

• STORAGE / SHELF

This product should be stored between +5°C & +25°C.

Avoid Direct Sunlight

The Shelf life of the product is 24 months from the manufacture date.