

## NEW! G-160 Tube Testing Tool

### Locate Pinhole Leaks with a Safe & Reliable Leak Detector

Early detection of leaking tubes in heat exchangers, boilers and condensers is essential to avoiding costly downtime. G-160 Tube Testing Tools from EST Group rapidly detect leaks while providing a safer environment for plant personnel. Innovative patent-pending gripper design provides increased operator safety. Operates with compressed air.

#### Features

- Patent-pending gripper design requires less operator force
- Interchangeable Seal & Washer Sets are size specific per tube I.D.
- Ergonomic design with push button activated air injection valve
- Safely test up to ten tubes per minute with less operator fatigue
- Durable corrosion resistant powder coated finish
- Lightweight aluminum construction (1.9lbs./0.9kg. ea.)
- Fully protected gauges - analog & digital available
- Neoprene seals

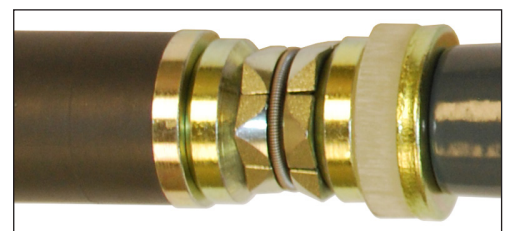


#### Kit Tube Size Range

- 0.49" - 1.11" (12.4mm - 28.2mm)

*with Optional Support Tube Assemblies*

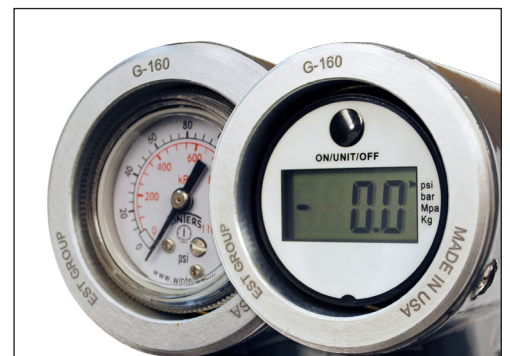
- 0.28" - 1.81" (7.1mm - 46.0mm)



*Patent-pending gripper design*

#### Kit Includes

- Injection & Plugging Tools with analog gauges
- Support Tube Assemblies (GSA-1611 & GSA-1612)
- Wrench & Seal Sizing Gauge
- Impact-resistant Case



*Analog and optional Digital gauges*

<b>GSA-1600 Kit</b>	<b>GSA-1611 Support Tube Assembly</b>	
	Functional Range	0.49" - 0.86" (12.4mm - 21.8mm)
	Available Seal Sizes <i>sold separately, see chart below</i>	GSA-0050-N, GSA-0053-N, GSA-0056-N, GSA-0060-N, GSA-0062-N, GSA-0065-N, GSA-0068-N, GSA-0072-N, GSA-0075-N, GSA-0078-N, GSA-0081-N, GSA-0083-N
	<b>GSA-1612 Support Tube &amp; Gripper Assembly</b>	
	Functional Range	0.86" - 1.11" (21.8mm - 28.2mm)
	Gripper Assembly	GSA-1642
Available Seal Sizes <i>sold separately, see chart below</i>	GSA-0087-N, GSA-0090-N, GSA-0093-N, GSA-0097-N, GSA-0100-N, GSA-0103-N, GSA-0106-N, GSA-0108-N	

Standard kit (GSA-1600) ships with analog gauges - for digital gauges, please order (GSA-1600-D).

<b>Optional Support Tube &amp; Gripper Assemblies</b>	<b>GSA-1610 Support Tube Assembly</b>	
	Functional Range	0.28" - 0.48" (7.1mm - 12.2mm)
	Available Seal Sizes <i>sold separately, see chart below</i>	GSA-0028-N, GSA-0030-N, GSA-0033-N, GSA-0037-N, GSA-0040-N, GSA-0043-N, GSA-0047-N
	<b>GSA-1613 Support Tube &amp; Gripper Assembly</b>	
	Functional Range	1.11" - 1.50" (28.2mm - 38.1mm)
	Gripper Assembly	GSA-1643
	Available Seal Sizes <i>sold separately, see chart below</i>	GSA-0110-N, GSA-0112-N, GSA-0115-N, GSA-0118-N, GSA-0122-N, GSA-0126-NS, GSA-0126-NS, GSA-0131-NS, GSA-0134-NS, GSA-0137-NS, GSA-0140-NS, GSA-0143-NS, GSA-0147-NS
	<b>GSA-1614 Support Tube &amp; Gripper Assembly</b>	
	Functional Range	1.49" - 1.81" (37.7mm - 46.0mm)
	Gripper Assembly	GSA-1644
	Available Seal Sizes <i>sold separately, see chart below</i>	GSA-0150-NS, GSA-0153-NS, GSA-0156-NS, GSA-0158-NS, GSA-0162-NS, GSA-0165-NS, GSA-0168-NS, GSA-0173-NS, GSA-0178-NS

### Extended Length Support Tube Assemblies available

1ft - 4ft lengths available for easier testing when a channel head or water box is present, contact EST Group Customer Service for details.

### Neoprene Seal & Washer Set Sizing Chart *(required for above configurations - sold separately)*

Tube OD	1/2"	5/8"	3/4"	7/8"	1"	1 1/8"	1 1/4"	1 3/8"	1-1/2"	1-5/8"	1-3/4"	2"
BWG												
8 - 9	-	0030	0043	0056	0068	0081	0093	0106	0118	0131	0143	0168
10 - 11	-	0037	0047	0062	0072	0087	0097	0112	0122	0137	0147	0173
12 - 13	0028	0040	0053	0065	0078	0090	0103	0115	0128	0140	0153	0178
14 - 15	0033	0047	0056	0072	0083	0097	0110	0122	0134	0147	0158	-
16 - 17	0037	0050	0062	0075	0087	0100	0112	0126	0137	0150	0162	-
18 - 19	0040	0053	0065	0078	0090	0103	0115	0128	0140	0153	0165	-
20 - 24	0043	0056	0068	0081	0093	0106	0118	0131	0143	0156	0168	-

Contact EST Group Customer Service for seal sizing and part numbers for applications in SWG, metric, or other tube sizes. Alternate seal materials including Viton® available.

Viton® is a registered trademark of DuPont Dow Elastomers.

**North, Central & South America EST Group** 2701 Township Line Road Hatfield, PA 19440-1770 USA | +1.215.721.1100 +1.800.355.7044 | est-info@curtisswright.com  
**Europe / Middle East / Africa EST Group B.V.** Hoorn 312a 2404 HL Alphen aan den Rijn The Netherlands | +31.172.418841 | est-emea@curtisswright.com  
**China** +86.400.636.5077 | est-china@curtisswright.cn | **Singapore** +65.3158.5052 | est-asia@curtisswright.com