

# CHEMFIX CH200

## Vinylester RESIN Styrene Free



### • CARTRIDGE SIZES

300ml | 420ml

A two component chemical anchoring injection system.  
A formulation derived from vinylester resin with very high bond strength, developed principally to anchor threaded rods and rebar into concrete. Used for high performance structural applications where loading is critical.

### • CHARACTERISTICS

- Suitable for high loads within standard annulus and embedments.
- Fast working times for early loading in time sensitive applications.
- No styrene allows for use indoors and in enclosed spaces.
- Use in wet or flooded environments and fixing holes.
- High durability, resistance to chemicals.
- Used for studs and rebar.
- 10:1 resin available in a variety of cartridge types.
- Fixings in concrete, wood, or other high strength materials.

### • APPROVALS / CERTIFICATIONS / TESTING

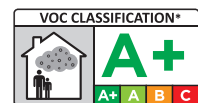
- 18/0797 - EAD 330499 – option 1,7, seismic C1 for M8 to M30 (rebar 8 to 32) and M12,M16 and M20 **C2 Seismic Approval**
- 18/0798 - EAD 330087-post-installed rebar connections for rebar 8 to 32 mm
- 18/0814 - EAD 330076 - Masonry M8-M16 use category b,c,d.
- CE Certified 1404-CPR-3052/3059/3065 - ZAG, Solvenia.
- ICC-ES Approval ESR 4366 Cracked and Uncracked 2012,2009,2006 IBC & IRC.
- Fire Test within ETA.
- Complies with Highways Agency Interim Advice Note 104/15.
- WRAS Approved for use with Potable drinking water\* approval no.
- LEED tested 2009 EQ c4.1 SCAQMD rule 1168 (2005.)
- VOC A+ Rating (Volatile Organic Content)

### • PHYSICAL PROPERTIES

- Mixed Colour - Grey
- Density - 1.61 kg/m<sup>2</sup>
- Compressive Strength - 73 N/mm<sup>2</sup> (EN ISO 604)

### • TYPICAL TENSILE PERFORMANCE - STANDARD EMBEDMENT DEPTH

Concrete, C20/25, 5.8 Grade Studding						
Size	Recommended Load (kN)		Spacing (S <sub>cr,N</sub> ) (mm)	Drill Hole Ø (mm)	Fixing Hole Ø (mm)	Setting Depth (mm)
	Tension (N <sub>rec</sub> )	Shear (V <sub>rec</sub> )				
M8	9.07	5.14	160	10	9	80
M10	14.36	8.57	200	12	12	90
M12	20.86	12.00	240	14	14	110
M16	38.86	22.29	320	18	18	125
M20	60.64	34.86	400	22	22	170
M24	87.43	50.29	460	28	26	210
M30	115.20	81.43	560	35	32	280



# CHEMFIX CH200

## Vinylester RESIN Styrene Free

### • TYPICAL PERFORMANCE IN AERATED CONCRETE

Characteristic values of resistance under tension & shear loads for Autoclaved Aerated Concrete. Compressive strength of material  $f_b > 6\text{MPa}$  Temp range  $-40$  to  $+40$  C degree. CH200.

Size	Condition :	d/d	w/w & w/d	d/d, w/w & w/d
	$H_{ef}$ (mm)	Tension (kN)	Tension (kN)	Shear (kN)
M8	80	2.5	2.5	6
M10	90	4	3.5	10
M12	100	5	4.5	10
M16	100	6.5	5.5	10




\*Note: The values are valid for steel 5.6 or greater. For steel 4.6 and 4.8 multiply  $VR_{k,b}$  by 0,8

### • WORKING AND HARDENING TIMES

Base Material Temperature	$-10^{\circ}\text{C}^{**}$	$-5^{\circ}\text{C}^{**}$	$5^{\circ}\text{C}$	$15^{\circ}\text{C}$	$25^{\circ}\text{C}$	$35^{\circ}\text{C}$
Gel Working Time	50'	40'	20'	9'	5'	3'
Curing Time Dry Concrete	240'	180'	90'	60'	30'	20'
Curing Time Wet Concrete	x 2	x 2	x 2	x 2	x 2	x 2

\*\*Resin Temperature must be at least  $20^{\circ}\text{C}$

### • APPROVALS

CE 1404	CE 1404	CE 1404
Chemfix Products Ltd 2018	Chemfix Products Ltd 2018	Chemfix Products Ltd 2018
		
DoP: <a href="http://www.chemfix.co.uk/dop/ch200c">www.chemfix.co.uk/dop/ch200c</a>	DoP: <a href="http://www.chemfix.co.uk/dop/ch200r">www.chemfix.co.uk/dop/ch200r</a>	DoP: <a href="http://www.chemfix.co.uk/dop/ch200m">www.chemfix.co.uk/dop/ch200m</a>
Chemfix CH200 ETA-18/0797 EAD 330499-00-0601 M8-M30 8mm - 32mm <b>Seismic C2 M12,16,20</b> 1404-CPR-3052	Chemfix CH200 ETA-18/0798 EAD 330087-00-0601 8mm - 32mm + Fire Post Installed Rebar 1404-CPR-3059	Chemfix CH200 ETA-18/0814 EAD 330076-00-0604 M8-M16 Masonry use category b,c,d 1404-CPR-3065

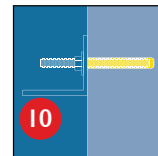
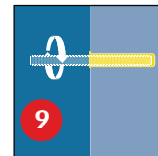
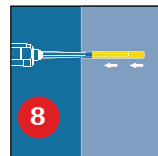
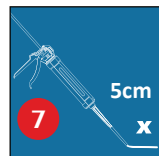
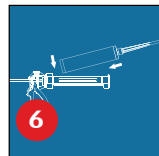
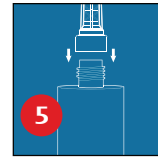
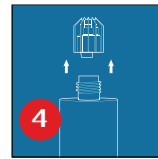
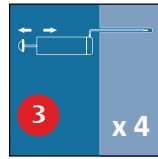
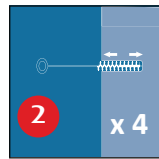
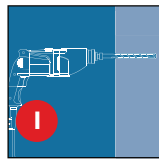


# CHEMFIX CH200

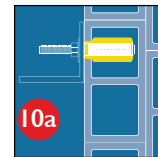
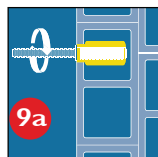
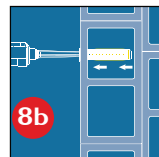
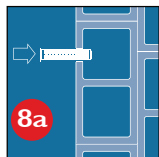
## Vinylester RESIN Styrene Free

### • INSTALLATION

Solid substrates



Hollow wall



For further information, see the Technical Data Sheet

### • STORAGE / SHELF

This product should be stored between +5°C & +25°C.

Avoid Direct Sunlight

The Shelf life of the product is 18 months from the manufacture date.