



Torque setting adjustable per 10 Nm

200 - 2.000 Nm

MAX SPEED 5 RPM

DIGITAL TORQUE SETTING

EXTREMELY LIGHT WEIGHT

PLUG AND PLAY

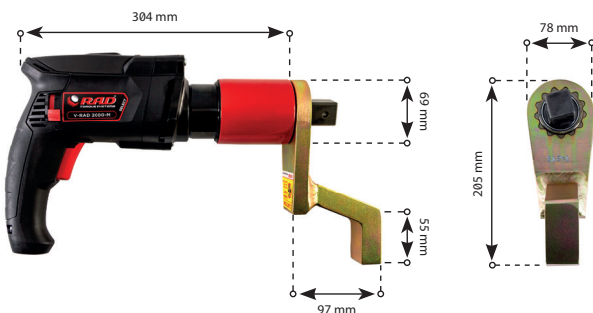
SPECIFICATIONS

- **TORQUE RANGE:** 200 - 2.000 Nm
- **SPEED:** 6 RPM
- **WEIGHT:** 4,2 Kg, excluding reaction arm and socket
- **SQUARE DRIVE:** 1 inch square drive
- **NOISE LEVEL:** Maximum 80 dB
- **TORQUE SETTING:** 10 Nm incremental via torque chart in table mode
- **ACCURACY:** 5% on full scale.

SUITABLE REACTION ARMS

Standard	Deep socket	Double ended
PN: 14213	PN: 18480	PN: 19094
Blank	Double ended blank	Safety sliding
PN: 17888	PN: 19093	PN: 25242

DIMENSIONS IN MM



TOOL KIT INCLUDING

- V-RAD SELECT 2000
- Standard reaction arm (PN: 14213)
- Two retaining rings (PN: 17367)
- Calibration certificate
- Usermanual
- Safety instructions on USB stick
- Weatherproof storage case
- Standard EU Socket.



IMPERIAL VERSION

- **MODEL:** V-RAD SELECT 1500
- **PART NUMBER:** 25629
- **TORQUE RANGE:** 150-1500 ft.lbs
- **WEIGHT:** 12 lbs.



Non Impacting



Safe & Reliable



According to European standards



LABORATORY ACCREDITATION BUREAU
ACCREDITED ISO/IEC 17025
Accredited ISO/IEC 17025

Swivelling tool handle & hanger

Product number	Suitable for
19827	(M)V-RAD (SELECT) 6, 14 & 1400
19825	(M)V-RAD (SELECT) 2000
19823	(M)V-RAD (SELECT) 31, 34 & 3400
26751	(M)V-RAD (SELECT) 4000
19821	MV-RAD 45
26674	MV-RAD 45
19819	MV-RAD 80
22931	MV-RAD 110
19817	MV-RAD 120

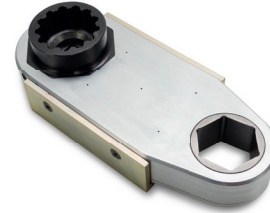


CX Offset Gearboxes

Product number	Model	Max output	Ratio
27978	Hex 50 mm	3400 Nm	1:1
28540	Hex 65 mm	5000 Nm	1:1

Product number	Suitable for	Gearbox
16155	V-RAD SELECT 1400	27978
26994	V-RAD SELECT 2000	27978
27853	V-RAD SELECT 4000	27978
28532	V-RAD SELECT 4000	28540

Hex reducer on request.



Impact Sockets

Product number	Hex size	Square drive	Bolt size	Suitable for
200190	24MM	3/4"	M16	(M)V-RAD (SELECT) 1400
200210	27MM	3/4"	M18	(M)V-RAD (SELECT) 1400
200211	30MM	3/4"	M20	(M)V-RAD (SELECT) 1400
200212	32MM	3/4"	M22	(M)V-RAD (SELECT) 1400
200004	36MM	3/4"	M24	(M)V-RAD (SELECT) 1400
200215	38MM	3/4"	M24	(M)V-RAD (SELECT) 1400
200005	41MM	3/4"	M27	(M)V-RAD (SELECT) 1400
200006	46MM	3/4"	M30	(M)V-RAD (SELECT) 1400
200216	50MM	3/4"	M33	(M)V-RAD (SELECT) 1400
200227	36MM	1"	M24	(M)V-RAD (SELECT) 2000 & 4000
200229	41MM	1"	M27	(M)V-RAD (SELECT) 2000 & 4000
200230	46MM	1"	M30	(M)V-RAD (SELECT) 2000 & 4000
200007	50MM	1"	M33	(M)V-RAD (SELECT) 2000 & 4000
200008	55MM	1"	M36	(M)V-RAD (SELECT) 2000 & 4000
200009	60MM	1"	M39	(M)V-RAD (SELECT) 4000



HX Offset Gearboxes

Product number	Model
24404	HX Offset Gearbox - 55 mm AF
22541	HX Offset Gearbox - 65 mm AF
16550	HX Offset Gearbox - 80 mm AF

Other sizes HX Offset gearboxes are available on request.



Nose extension series

Product number	Model	Reaction arm	Length
14195	(M)V-RAD (SELECT) 1400	13512	324 mm
14200	(M)V-RAD (SELECT) 1400	13512	400 mm
14205	(M)V-RAD (SELECT) 1400	13512	476 mm
18185	(M)V-RAD (SELECT) 2000	20153	349 mm
19058	(M)V-RAD (SELECT) 2000	20153	400 mm
19059	(M)V-RAD (SELECT) 2000	20153	476 mm
27641	(M)V-RAD (SELECT) 4000	13484	305 mm
27643	(M)V-RAD (SELECT) 4000	13484	381 mm
27651	(M)V-RAD (SELECT) 4000	13484	457 mm

