

**800 - 4.000 Nm**

**MAX SPEED 19 RPM**

**AUTOMATIC 2-SPEED**

**AUTO REACTION ARM BACK OFF**

**BRUSHLESS MOTOR**

**DOUBLE SAFETY TRIGGER**

**OPTION**



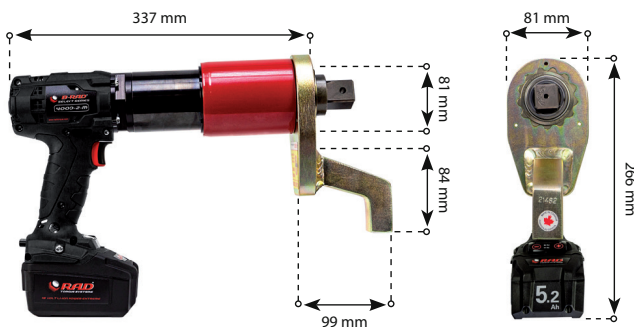
Torque setting adjustable per 10 Nm

## SPECIFICATIONS

- **GEARBOX:** 800 - 4.000 Nm
- **SPEED:** 19 RPM
- **WEIGHT:** 6,7 Kg with battery, excluding reaction arm and impact socket
- **SQUARE DRIVE:** 1 inch square drive (replaceable)
- **BATTERY:** -> 1x 18V 8.0 Ah/144 Wh and 1x 5.2 Ah/93 Wh Li-ion battery
- **NOISE LEVEL:** Maximum 65 dB
- **TORQUE SETTING:** Steps of 10 Nm or ft. lbs
- **REPEATABILITY ON SAME JOINT\*:** +/- 3%.

\* Test results from RAD's certified calibration lab

## DIMENSIONS IN MM



## SUITABLE REACTION ARMS

Standard	Deep socket	Double ended
PN: 27022	PN: 24814	PN: 25437
Blank	Double ended blank	Safety sliding
PN: 24813	PN: 25016	PN: 29430

## TOOL KIT INCLUDING

- B-RAD SELECT 4000-2
- Standard reaction arm (PN: 27022)
- Two retaining rings (PN: 21474)
- Two batteries with quick charger
- Calibration certificate
- Usermanual
- Safety instructions on USB stick
- Weatherproof storage case.



## IMPERIAL VERSION

- **MODEL:** B-RAD SELECT 3000-2
- **PART NUMBER:** 28290
- **TORQUE RANGE:** 600 - 3000 ft.lbs
- **WEIGHT:** 14.7 lbs.



### Drop prevention

Product number	Model
200476	B-RAD Drop prevention



### Battery pack

Product number	Model
200473	8.0 Ah LiHD battery pack



### Double Safety Button

Product number	Model
25949	Double Safety Button

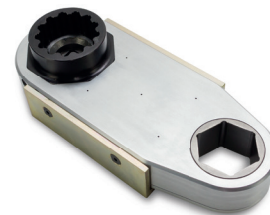


### CX Offset Gearboxes

Product number	Model	Max output	Ratio
27978	Hex 50 mm	3400 Nm	1:1
28540	Hex 65 mm	5000 Nm	1:1

Product number	Suitable for	Gearbox
11537	B-RAD SELECT 275 & 475	27978
16155	B-RAD SELECT 700 & 1400	27978
26994	B-RAD SELECT 2000	27978
27853	B-RAD SELECT 4000	27978
28531	B-RAD SELECT 4000	28540

Hex reducer on request.



### Impact Sockets

Product number	Hex size	Square drive	Bolt size	Suitable for
200187	17MM	3/4"	M10	B-RAD SELECT 275
200219	19MM	3/4"	M12	B-RAD SELECT 275
200189	22MM	3/4"	M14	B-RAD SELECT 275
200190	24MM	3/4"	M16	B-RAD SELECT 275, 700 & 1400
200210	27MM	3/4"	M18	B-RAD SELECT 275, 700 & 1400
200211	30MM	3/4"	M20	B-RAD SELECT 700 & 1400
200212	32MM	3/4"	M22	B-RAD SELECT 700 & 1400
200004	36MM	3/4"	M24	B-RAD SELECT 700 & 1400
200215	38MM	3/4"	M24	B-RAD SELECT 1400
200005	41MM	3/4"	M27	B-RAD SELECT 1400
200006	46MM	3/4"	M30	B-RAD SELECT 1400
200216	50MM	3/4"	M33	B-RAD SELECT 1400
200227	36MM	1"	M24	B-RAD SELECT 2000 & 4000
200229	41MM	1"	M27	B-RAD SELECT 2000 & 4000
200230	46MM	1"	M30	B-RAD SELECT 2000 & 4000
200007	50MM	1"	M33	B-RAD SELECT 2000 & 4000
200008	55MM	1"	M36	B-RAD SELECT 2000 & 4000
200009	60MM	1"	M39	B-RAD SELECT 4000
200238	55MM	1,5"	M36	B-RAD SELECT 7000
200297	60MM	1,5"	M39	B-RAD SELECT 7000
300052	70MM	1,5"	M45	B-RAD SELECT 7000
200197	75MM	1,5"	M48	B-RAD SELECT 7000
200241	80MM	1,5"	M49	B-RAD SELECT 7000
200298	90MM	1,5"	M52	B-RAD SELECT 7000



### Nose extension series

Product number	Model	Reaction arm	Length
14195	B-RAD SELECT 1400	13512	324 mm
14200	B-RAD SELECT 1400	13512	400 mm
14205	B-RAD SELECT 1400	13512	476 mm
18185	B-RAD SELECT 2000	20153	349 mm
19058	B-RAD SELECT 2000	20153	400 mm
19059	B-RAD SELECT 2000	20153	476 mm
27641	B-RAD SELECT 4000	13484	305 mm
27643	B-RAD SELECT 4000	13484	381 mm
27651	B-RAD SELECT 4000	13484	457 mm



### Swivelling tool handle & hanger

Product number	Suitable for
19827	B-RAD SELECT 275, 700 & 1400
19825	B-RAD SELECT 2000
26751	B-RAD SELECT 4000
26674	B-RAD SELECT 7000

